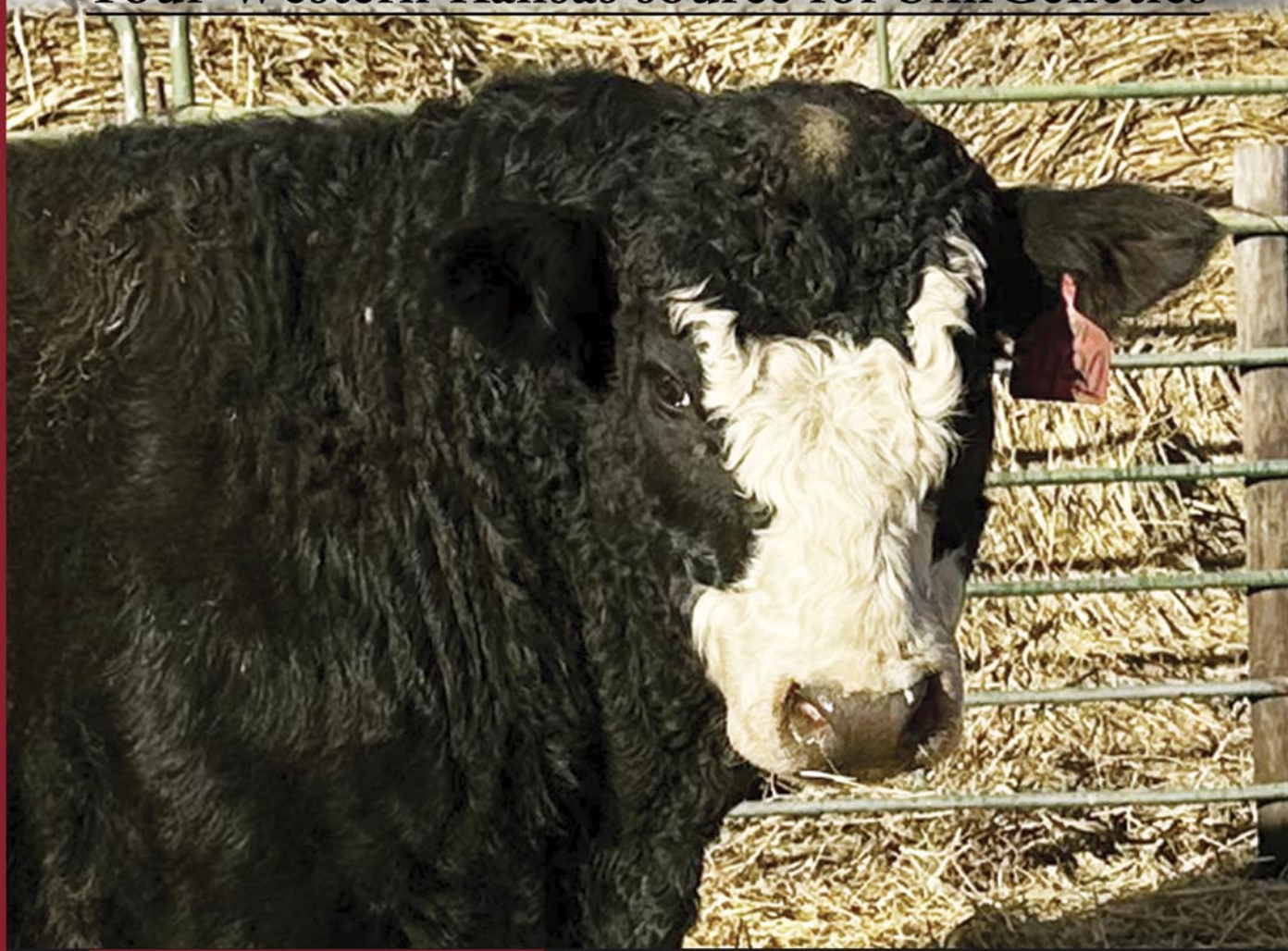


# DIXSON FARMS INC *Simmentals*

Your Western Kansas source for SimGenetics



**Open House  
and  
Limited Auction**

**February 21, 2026  
Atwood, Kansas**

**Purebred & SimAngus™ Bulls**

**Selling:  
9 Yearling Bulls  
19 Coming 2-year-olds**

Visit us on the web to see more pictures, sale updates and full catalog.

**[www.dixsonfarms.com](http://www.dixsonfarms.com) • Atwood, KS • 785.626.3744**



---

# DIXSON FARMS

---

## 2026 PRIVATE TREATY BULL SALE

All of us here at Dixon Farms would like to invite you to evaluate our 2026 bull offering. For those who have followed our program, you will recognize that this year is the next step in our evolution to a 2 year old program. Leading off the bulls this year are a set of March/April 2 year olds including our clean-up bulls from last year. This gives us the opportunity to use known genetics as our pasture sires but still make these top shelf genetics available to our customers. Next, you will find our usual set of May/June born bulls from our low input herd. Finally, we will round out the offering with some March born yearlings that are almost all AI sired. This year, all bulls will have DNA enhanced EPDs by sale day so watch for updates.

Our mission continues to be to focus on identifying and developing superior maternal genetics. We believe that the primary driver of profitability now and in the future will be true stayability. This is true whether you retain your own heifers or have a terminal breeding program. Feet and leg structure, fertility, tooth retention, disease resilience, parasite resistance, disposition, grazing behavior, heat tolerance, and cold tolerance are all critical traits for increasing stayability and thus profit.

Our industry has lost focus, in many cases, on true stayability. Growth and carcass traits are more easily quantified and in demand by both the feeder and packer segments, so they can't be ignored. We factor these things into our AI program, but when it comes to selecting the replacement females that will raise the bulls of the future, we will continue to focus our attention on those traits that will make a cowherd profitable even if there aren't record high prices or ideal weather conditions. We look forward to continuing to share these unique genetics with you.

We hope to see you on Feb 21st. If you can't be with us that day, give us a call and come take a look before then. Meantime, check our website for additional pictures, DNA updates and more. If you have any questions, give us a call for more information on these bulls or our program and we hope to see you on or before the 21st.

### **Dixon Farms Inc.**

Carol Dixon Kevin Dixon Lyle Dixon





# DIXSON FARMS

## 2026 PRIVATE TREATY BULL SALE

February 21, 2026 • Atwood, Kansas

### SALE DAY SCHEDULE:

11 a.m. Cattle available for viewing and silent auction opens  
12 p.m. Lunch will be ready.  
1:30 p.m. Closeout begins.

**SALE FORMAT:** This year our private treaty sale begins on February 21. There will be bid sheets posted for each lot on that day. We will proceed with a simple silent auction format. The minimum bid for each lot will be available in the sale supplement a few days before the sale, and the minimum bid increment will be \$250. At 1:30, we will begin closing bids with a live bid off. The bulls that are left after that time will be available first come, first serve at the base price unless otherwise noted.

**CLOSEOUT ORDER:** This year, we will not set the closeout order until just before we close. We will close in the order of the high current bids on the silent auction. If the closing order is important to you, place a bid on your first choice during the silent auction to help set the closeout order.

**SALE TERMS:** Full payment is due the day of sale. Make checks payable to Dixon Farms, Inc.

**BULL CARE:** All bulls will have free board until April 1. We can keep the yearling bulls for \$2 per day after April 1. The 2 year olds can be kept for \$3 after April 1.

**SEMEN INTEREST:** The buyer will receive full possession, full salvage value and 100% semen interest on all bulls sold unless otherwise noted or announced. If a bull is collected, Dixon Farms reserves the opportunity to a one time 30 unit package for in herd use only at cost of production.

**DELIVERY:** Economical delivery can be arranged by talking to Lyle.

**GUARANTEE:** All our bulls are 100% guaranteed for the first breeding season. This means if there are any disposition, soundness, calving, or color problems, we will take the bull back and replace him or assist you in finding a replacement. The LAST thing we want to do is sell and perpetuate problem cattle. This is NOT mortality insurance. Once they are sold, they are your bulls. All sight unseen purchases are guaranteed to be as represented.

### SALE DAY PHONES:

Lyle Dixon 785-626-4391  
Kevin Dixon 785-626-2876  
Carol Dixon 785-475-4044  
Alisha Dixon 785-626-4119

### DIRECTIONS

**From Atwood:** 5 mi. west, 2 mi. south, and follow the Beaver Creek Road west and south for 5 mi.

**From McDonald:** 13 mi. east, 2 mi. south, and follow the Beaver Creek Road west and south for 5 miles

**From Colby:** 16 mi. north to Road E, 5 mi. west, 3 mi. north, 1 mi. west, 4 mi. north, 1/4 mi. west

**SEMEN CHECK:** All bulls sell guaranteed to pass a Breeding Soundness Evaluation, but it has not been performed yet. Bulls will be tested in mid to late March to get past the coldest weather and closer to breeding season for most people. If you buy a bull and need to have him checked sooner than that for an earlier pick up, notify us at check out and let Lyle know.

**SUPPLEMENT SHEET:** A supplement sheet will be available with current weights, scrotals, updated EPDs, and base price about a week before the sale.

**TERMS AND CONDITIONS:** All bulls sell under the terms and conditions of the American Simmental Association.

**STORM DATE:** In case of EXTREME weather, the sale will be moved to February 28.

Created by:

**ASA PUBLICATION, INC**

One Genetics Way, Bozeman, MT 59718

Phone: 406-587-2778

[www.simmental.org](http://www.simmental.org)





LOT 1



LOT 2



LOT 3

4

## DX MARVEL 54M441

ASA# 4431506

Tattoo: M441 • BD: 04-05-2024  
Homo Black • Homo Polled • PB SM

Sire: **BRIDLE BIT HERO H0115**  
Koch Big Timber 685D  
Bridle Bit Miss B452  
Gibbs 2654Z Bullet Proof  
Dam: **DX FRANCINE 54F826**  
DX Angela 54A405

Adj. BW	74
Adj. WW	589
WW ratio	104
API	156
TI	81

CE	BW	WW	YW	MCE	MM	MWW	Stay	CW	YG	MB	BF	REA
19.1	-3.5	64.9	99.2	10.3	30.5	62.9	19.1	26.9	-33	.19	-.080	.63

Homozygous Black Homozygous Polled. This was our choice to clean up our black heifers last summer. M441 offers sleep all night calving ease with adequate growth, good structure, and exceptional maternal potential. DNA Pending.

1

## DX MCGRAW 131M447

ASA# 4431543

Tattoo: M447 • BD: 04-16-2024  
Red • Polled • 1/2 SM 1/2 AR

Sire: **DX JESTER 79J188**  
KCC Excellence 139-774  
DX Dawn 79D685  
HXC Conquest 4405P  
Dam: **HSF MS QUEST 5Y 31B**  
HSF MS Maker 107U 5Y

Adj. BW	84
Adj. WW	582
WW ratio	102
API	128
TI	82

CE	BW	WW	YW	MCE	MM	MWW	Stay	CW	YG	MB	BF	REA
7.6	.5	80.3	132.7	5.8	26.3	66.3	15.9	29	-.23	.32	-.038	.68

Non-Dilute Red Homozygous Polled. McGraw is a true powerhouse. This is the last son of the 31B cow that produced our Lot 1 bull on 4 separate occasions. This red SimAngus powerhouse is the complete package of growth, thickness, and sound structure. We used him to clean up red cows last summer. DNA pending

2

## DX MOJO 79M411

ASA# 4431548

Tattoo: M411 • BD: 03-20-2024  
Red • Polled • 1/2 SM 1/4 AN 1/4 AR

Sire: **W/C LAST CALL 206A**  
Remington Lock N Load 54U  
G C F Miss New Level 206  
KCC Excellence 139-774  
Dam: **DX JADE 79J175**  
DX Burgundy 79B528

Adj. BW	82
Adj. WW	654
WW ratio	115
API	145
TI	84

CE	BW	WW	YW	MCE	MM	MWW	Stay	CW	YG	MB	BF	REA
14.1	-1.6	74.9	119.1	8.8	26.7	64	16.5	36	-.14	.45	-.015	.68

Non-Dilute Red Homozygous Polled. Mojo is a one of a kind SimAngus. His DNA enhanced EPDs say that he should be a heifer bull, but his structure, thickness and depth of stifle point to a do it all sire for cows. Add to that his easy going disposition and you have the complete package. We used him to clean up red and red carrier cows last summer.

3

## DX MONTANA 816M412

ASA# 4431534

Tattoo: M412 • BD: 03-21-2024  
Homo Black • Homo Polled • 3/4 SM 5/32 AN 3/32 AR

Sire: **CIRCLE S LEACHMAN 600U**  
Landridge Jet Black  
BDV R52 MS Black Knight  
DX/DF Desperado 592D592  
Dam: **DX GEMINI 816G963**  
DX Toledo 816T130

Adj. BW	84
Adj. WW	574
WW ratio	101
API	147
TI	71

CE	BW	WW	YW	MCE	MM	MWW	Stay	CW	YG	MB	BF	REA
18	-0.4	61.8	99.8	9.7	26.2	57	23.4	17.9	-.24	.26	-.056	.43

Homozygous Black Homozygous Polled Baldy. M412 is an example of the time tested genetics that we are incorporating. His dam is the latest herd bull producer from our long line of 816 cows and his sire is the immortal 600U that helped transform black Simmentals. His DNA enhanced EPDs put him in the top 1% of the breed for Stay. We used him to clean up black cows last summer.

5

## DX MILLION 503M407

ASA# 4431542

Tattoo: M407 • BD: 03-19-2024  
Homo Black • Homo Polled • PB SM

Sire: **TJ GOLD 274G**  
Hook's Eagle 6E  
TJ 12C  
STF Royal Affair Z44M  
Dam: **RUTH MS F503**  
Catching Confidence C503

Adj. BW	81
Adj. WW	509
WW ratio	89
API	141
TI	70

CE	BW	WW	YW	MCE	MM	MWW	Stay	CW	YG	MB	BF	REA
15.6	-3.7	47.3	69.3	6.2	15.1	38.7	15.4	6.9	-.19	.28	-.004	.55

Homozygous Black Homozygous Polled. Sometimes EPDs don't paint the full picture. M407's sire is producing numerous sale topping bulls and his dam is a picture of moderation and structural correctness.



## 2-Year-Old Program

Our 2 year old program includes bulls from our March/April calving herd as well as our low input May/June calving herd. These two groups are handled completely separate up until the time that they went to grass together in May. The best way to compare performance of individuals from the 2 groups will be the DNA enhanced EPDs available sale day. They all grazed until November when we pulled them into the lot. The stayability of our 2-year old bulls is something that we are really proud of. These bulls are bred and developed to breed a lot of cows for a lot of years. All bulls are virgin except where otherwise noted.

6

### DX MARSHALL 198M452

ASA# 4431540

Tattoo: M452 • BD: 04-12-2024

Black • Polled • 3/4 SM 1/4 AN

KOCH BIG TIMBER 685D

Sire: BRIDLE BIT HERO H0115

BRIDLE BIT MISS B452

DX/DF DESPERADO 592D592

Dam: DX JORDAN 198J153

DX ZEPHYR 198Z277

Adj. BW	85
Adj. WW	568
WW ratio	100
API	131
TI	76

CE	BW	WW	YW	MCE	MM	MWW	Stay	CW	YG	MB	BF	REA
11.8	-0.9	70	105.3	7.8	23.5	58.4	16.6	34.8	-1.9	.31	-.043	.58

Homozygous Black Homozygous Polled. Here is the Black powerhouse that should be on everyone's short list on sale day. He is thick topped, long spined and easy going. This is the kind of bull that we are striving to produce. DNA Pending



LOT 6

7

### DX MAJOR 184M451

ASA# 4431515

Tattoo: M451 • BD: 04-11-2024

Black • Homo Polled • PB SM

KOCH BIG TIMBER 685D

Sire: BRIDLE BIT HERO H0115

BRIDLE BIT MISS B452

BRIDLE BIT FUTURE F822

Dam: DX HODA 184H022

DX EDITH 184E732

Adj. BW	75
Adj. WW	572
WW ratio	101
API	159
TI	84

CE	BW	WW	YW	MCE	MM	MWW	Stay	CW	YG	MB	BF	REA
15.7	-2.6	67	103.6	8.5	27.5	61	18.7	31.3	-.20	.36	-.045	.57

Double Black Homozygous Polled. Major is the most expressively muscled of the entire 2 year old offering. He blends the calving ease of 2 of our former heifer bulls with length and power. DNA Pending

8

### DX MANDATE 816M438

ASA# 4431501

Tattoo: M438 • BD: 04-04-2024

Hetero Black • Homo Polled • PB SM

WS ACE OF HEARTS E227

Sire: KBHR MR ACE OF HEARTS J244

KBHR E003

KRJ HZN DIRECT IMPACT F805

Dam: DX KRISTA 816K234

DX DELUXE 816D638

Adj. BW	76
Adj. WW	615
WW ratio	108
API	155
TI	82

CE	BW	WW	YW	MCE	MM	MWW	Stay	CW	YG	MB	BF	REA
18.5	-2.7	67.2	94.6	8.8	23.8	57.4	17.7	22.5	-.45	.26	-.068	1.06

Homozygous Polled Heterozygous Black. With CE and BW numbers in the top 5 percent, this purebred bull would be an excellent choice for either cows or heifers. He is really deep bodied with an easy keeping look.



LOT 9

9

### DX MONTGOMERY 131M420

ASA# 4431549

Tattoo: M420 • BD: 03-25-2024

Red • Homo Polled • 3/4 SM 5/32 AR 3/32 AN

CDI PERSPECTIVE 238A

Sire: CDI PERCEPTION 254E

CDI MISS POWER GRID 30C

GLS FIREBIRD F102

Dam: DX JULIETTE 131J168

HSF MS QUEST 5Y 31B

Adj. BW	84
Adj. WW	549
WW ratio	97
API	130
TI	68

CE	BW	WW	YW	MCE	MM	MWW	Stay	CW	YG	MB	BF	REA
15.1	-2.6	58.5	88.3	7.6	27.7	56.9	19.5	24.4	-.31	.14	-.058	.70

Non-Dilute Red Homozygous Polled. Here is another member of the 131 cow family that has produced so many good ones. Use him in a purebred or SimAngus program and keep every heifer with confidence. He is a maternal brother to lot 27.





LOT 10



LOT 11

10

## DX MAXIMIZE 608M465

ASA# 4462038

Tattoo: M465 • BD: 05-17-2024

Red • Polled • 1/2 SM 1/2 AR

Sire: BIEBER CL ATOMIC C218

— BIEBER CL ENERGIZE F121

— BIEBER CL ADELLE 575D

— WS BEEF KING W107

Dam: DX DIXIE 608D633

— DX ZARELDA 608Z247

Adj. BW	82
Adj. WW	
WW ratio	
API	141
TI	81

CE	BW	WW	YW	MCE	MM	MWW	Stay	CW	YG	MB	BF	REA
13.9	-1.7	75.1	116.2	8	30.2	67.6	18.7	26.7	-1.8	.30	-.024	.62

Non-Dilute Red Homozygous Polled. M465 leads off the set of May/June born bulls. He is one of the most complete red SimAngus bulls that we have raised. His sire is the ABS Red Angus bull that is producing some really outstanding females. Maximize profits with a bull like this. DNA Pending

11

## DX MAGNITUDE 801M491

ASA# 4462053

Tattoo: M491 • BD: 06-13-2024

Red • Polled • PB SM

Sire: KRJ HZN DIRECT IMPACT F805

— DX KODIAK 816K232

— DX CLEVELAND 816C536

— W/C FULLY LOADED 90D

Dam: JES MISS ROSE 801F

— JES WONDA 635D

Adj. BW	92
Adj. WW	
WW ratio	
API	150
TI	85

CE	BW	WW	YW	MCE	MM	MWW	Stay	CW	YG	MB	BF	REA
12.2	0.1	76.2	111.9	5.7	22.7	60.7	17.9	22.8	-.36	.34	-.067	.78

Non-Dilute Red Homozygous Polled. The really good ones find their way to the top. This deep dark red purebred maternal brother of DX Jackpot has the look, the structure, the disposition, and the numbers to be a true herd bull. DNA Pending

13

## DX MAC 81M485

ASA# 4462036

Tattoo: M485 • BD: 06-05-2024

Red • Polled • PB SM

Sire: BOZ REDCOAT

— DX JACKPOT 801J125

— JES MISS ROSE 801F

— TRIPLE C MAJIC MAN M211

Dam: DX HAZEL 81H071

— DX EVELYN 81E752

Adj. BW	85
Adj. WW	
WW ratio	
API	128
TI	77

CE	BW	WW	YW	MCE	MM	MWW	Stay	CW	YG	MB	BF	REA
9.5	1.4	75.4	110.5	6.6	23.4	61	16.6	31.1	-.43	.09	-.094	.90

Non-Dilute Red Double Polled. Mac is another purebred Jackpot son that can do it all. His sire was known for staying in good condition year round regardless of weather and forage availability. We will be interested in knowing if these sons share his same affinity for sagebrush and yucca in the winters. DNA Pending

15

## DX MAGNUM 300M464

ASA# 4462060

Tattoo: M464 • BD: 05-17-2024

Black • Polled • 3/4 SM 1/4 AN

Sire: KOCH BIG TIMBER 685D

— BRIDLE BIT HERO H0115

— BRIDLE BIT MISS B452

— DX/DF DESPERADO 592D592

Dam: DX HEFTY 300H069

— DX CHUBBY 300C630

Adj. BW	81
Adj. WW	
WW ratio	
API	134
TI	75

CE	BW	WW	YW	MCE	MM	MWW	Stay	CW	YG	MB	BF	REA
16.5	-3	63.3	93.3	9.4	26	57.5	15.6	32.5	-.25	.28	-.050	.67

Double Black Double Polled Baldy. Magnum is the first of 3 baldy sons of Bridle Bit Hero. They are easy keeping, moderate in their type and should sire some outstanding daughters. He has a little scar on his right eye, but it will not effect his function. DNA Pending

12

## DX MAX 62M483

ASA# 4462039

Tattoo: M483 • BD: 06-04-2024

Red • Polled • PB SM

Sire: BOZ REDCOAT

— DX JACKPOT 801J125

— JES MISS ROSE 801F

— DX ATLAS 078A341

Dam: DX DIVINE 62D701

— DX ZELLWEGER 62Z244

Adj. BW	83
Adj. WW	
WW ratio	
API	128
TI	76

CE	BW	WW	YW	MCE	MM	MWW	Stay	CW	YG	MB	BF	REA
11.3	1	73.9	101.9	7.3	22.6	59.5	16.6	28.7	-.37	.08	-.080	.80

Non-Dilute Red Double Polled. M483 is the first of 3 purebred sons of Jackpot. They would be an outstanding choice for use on red angus cows to make some outstanding crossbred heifers. DNA Pending

14

## DX MICHELIN 078M496

ASA# 4462024

Tattoo: M496 • BD: 06-22-2024

Red • Polled • PB SM

Sire: BOZ REDCOAT

— DX JACKPOT 801J125

— JES MISS ROSE 801F

— DX BRUTUS 816B410

Dam: DX GLITTER 078G011

— DX YEARBOOK 078Y163

Adj. BW	80
Adj. WW	
WW ratio	
API	111
TI	70

CE	BW	WW	YW	MCE	MM	MWW	Stay	CW	YG	MB	BF	REA
13.2	0.2	72.3	105.3	8.7	28.2	64.2	14.4	29.1	-.39	.02	-.086	.79

Non-Dilute Red Heterozygous Polled/Scurred Baldy. M496 combines 3 of the strongest cow families to ever walk the pastures here. These bulls are thick, growthy, and easy keeping. He has a small star in his face. DNA Pending



16

## DX MATTEL 037M490

ASA# 4462058

Tattoo: M490 • BD: 06-09-2024

Black • Polled • PB SM

Koch Big Timber 685D

Sire: BRIDLE BIT HERO H0115

BRIDLE BIT MISS B452

3C Beau NS 4332B BZ

Dam: DX GORGEIOUS 037G901

SLC MS 55X 2E

Adj. BW	69
Adj. WW	
WW ratio	
API	161
TI	77

CE	BW	WW	YW	MCE	MM	MWW	Stay	CW	YG	MB	BF	REA
21	-4.7	52.8	80.9	11.8	28.7	55	19.3	27.4	-25	.29	-.056	.59

Homozygous Black Homozygous Polled Baldy. Use this bull on a set of heifers to give a unique look to their first calf, while making some one of a kind daughters, it is his face that graces the cover this year. DNA Pending



LOT 16

17

## DX MANNIX 816M468

ASA# 4462041

Tattoo: M468 • BD: 05-19-2024

Hetero Black • Polled • PB SM

Koch Big Timber 685D

Sire: BRIDLE BIT HERO H0115

BRIDLE BIT MISS B452

DX Atlas 078A341

Dam: DX HALLMARK 816H048

DX DELUXE 816D638

Adj. BW	71
Adj. WW	
WW ratio	
API	147
TI	76

CE	BW	WW	YW	MCE	MM	MWW	Stay	CW	YG	MB	BF	REA
18.6	-3.1	61.3	88.8	10.9	29.2	59.8	18.5	28.1	-29	.13	-.065	.63

Heterozygous Black Homozygous Polled Baldy. M468 rounds out this group of baldy sons of Hero. This one is very easy keeping with a really thick and deep look. DNA Pending



LOT 17

18

## DX MARINE 63M461

ASA# 4462020

Tattoo: M461 • BD: 05-08-2024

Black • Polled • 5/8 SM 3/8 AN

BALDRIDGE COMMAND C036

Sire: CCR COMMANDER 5135F

CCR MS 2073 COWBOY 5135C

DX/DF DESPERADO 592D592

Dam: DX GINA 63G944

DX ANNA 63A313

Adj. BW	81
Adj. WW	
WW ratio	
API	152
TI	83

CE	BW	WW	YW	MCE	MM	MWW	Stay	CW	YG	MB	BF	REA
14.6	-0.9	75.7	114.5	9.8	23.6	61.3	21.3	32.1	-29	.41	-.045	.85

Double Black Double Polled. Here is the bull that should be on everyone's list. A solid black SimAngus bull that is very long bodied, and easy keeping. We have been so impressed by the Commander calves that we have continued to use him. Expect more sons and grandsons in upcoming sales. DNA Pending



LOT 18

19

## DX MAGICIAN 145M470

ASA# 4462061

Tattoo: M470 • BD: 05-25-2024

Black • Polled • 5/8 SM 3/8 AN

SVF/NJC MO BETTER M217

Sire: SC MO MAGIC S47

AKERS RUBY 2184

J BAR J NIGHTRIDE 225Z

Dam: DX HANNAH 145H041

F45

Adj. BW	80
Adj. WW	
WW ratio	
API	122
TI	75

CE	BW	WW	YW	MCE	MM	MWW	Stay	CW	YG	MB	BF	REA
10.4	-0.1	70.6	115.9	6.3	22.8	58	13.8	38.8	-26	.27	-.054	.79

Double Black Double Polled Baldy. Magician is another black baldy with a little different pedigree than we usually have. He has a really nice profile, is thick made, and has a good disposition. DNA Pending



LOT 19





## LOT 20

21

### DX NASH 357N519

ASA# 4610510

Tattoo: N519 • BD :03-18-2025  
Black • Polled • PB SM

SVF/NJC MO BETTER M217

Sire: ASR MO BETTER Y120

ASR LITTLE DREAM U8150

DX/DF DESPERADO 592D592

Dam: DX HATTIE 357H051

DX ERMA 357E766

Adj. BW	92
Adj. WW	604
WW ratio	109
API	130
TI	79

CE	BW	WW	YW	MCE	MM	MWW	Stay	CW	YG	MB	BF	REA
8.5	1.4	77.4	120	6.5	26.7	65.2	16.6	33.7	-.42	.12	-.082	.99

Double Black Double Polled. We are using Mo in our breeding program again to try to add more daughters to our herd. He was known for siring the right kind of daughters with good udders and maternal instincts. This is the soggiest of the 3 sons. DNA Pending



## LOT 23

24

### DX NICHOLSON 503N525

ASA# 4610506

Tattoo: N525 • BD: 03-20-2025  
Black • Polled • PB SM

HTP/SVF DURACELL T52

Sire: THSF LOVER BOY B33

RP/MP RIGHT TO LOVE 015U

STF ROYAL AFFAIR Z44M

Dam: RUTH MS F503

CATCHING CONFIDENCE C503

Adj. BW	81
Adj. WW	544
WW ratio	98
API	121
TI	74

CE	BW	WW	YW	MCE	MM	MWW	Stay	CW	YG	MB	BF	REA
12	0.5	67.8	96.8	5.4	22.6	56.4	11.7	17.3	-.32	.12	-.063	.62

Double Black Double Polled. The combination of Lover Boy and Royal Affair gave us this standout. His unique profile and strong hip will catch your attention on sale day. DNA Pending

20

### DX NONE BETTER 816N520

ASA# 4610508

Tattoo: N520 • BD: 03-18-2025

Black • Polled • PB SM

SVF/NJC MO BETTER M217

Sire: ASR MO BETTER Y120

ASR LITTLE DREAM U8150

TRPH RRR NIGHTFORCE B30

Dam: DX JANE 816J134

DX FAYE 816F835

Adj. BW	96
Adj. WW	616
WW ratio	111
API	137
TI	81

CE	BW	WW	YW	MCE	MM	MWW	Stay	CW	YG	MB	BF	REA
7.8	1.8	74.9	111.5	5.4	29.4	66.7	17.5	27.7	-.43	.27	-.082	.93

Double Black Homozygous Polled. We lead off this year's offering of yearlings with 3 outstanding sons of our old Mo bull. They are thick, easy keeping and should be maternal powerhouses. DNA Pending

22

### DX NASHVILLE 816N524

ASA# 4610499

Tattoo: N524 • BD: 03-20-2025

Black • Polled • 3/4 SM 5/32 AN 3/32 AR

SVF/NJC MO BETTER M217

Sire: ASR MO BETTER Y120

ASR LITTLE DREAM U8150

DX/DF DESPERADO 592D592

Dam: DX GEMINI 816G963

DX TOLEDO 816T130

Adj. BW	87
Adj. WW	640
WW ratio	115
API	122
TI	72

CE	BW	WW	YW	MCE	MM	MWW	Stay	CW	YG	MB	BF	REA
12.5	0	69.3	107.1	8.2	29.4	63.9	17.2	22.9	-.37	.12	-.078	.72

Double Black Double Polled. N524 is a maternal brother to Lot 3. He follows the same pattern with a little more stretch than a lot of today's popular genetics. He does have a very small star. DNA Pending

23

### DX NITRO 63N515

ASA# 4610456

Tattoo: N515 • BD: 03-16-2025

Black • Polled • 3/4 SM 1/4 AN

TJ FROSTY 318E

Sire: TJ STONE COLD 336G

TJ 11D

TJ PLATTE RIVER 370D

Dam: DX KANA 63K220

DX ANNA 63A313

Adj. BW	77
Adj. WW	533
WW ratio	96
API	146
TI	83

CE	BW	WW	YW	MCE	MM	MWW	Stay	CW	YG	MB	BF	REA
15.1	-1.7	78.1	118.4	9.8	26.6	65.6	19.3	34.7	-.14	.33	-.020	.62

Nitro is our only son of Stone Cold this year. This 3/4 blood would be an excellent choice on Angus or SimAngus cows or heifers to make the kind of replacement females that are in demand. DNA Pending

25

### DX NIGHTHAWK 29N509

ASA# 4610461

Tattoo: N509 • BD: 03-13-2025

Black • Polled • PB SM

HOOK'S XAVIER 14X

Sire: HOOK'S BLACK HAWK 50B

HOOK'S YVETTE 100Y

HOOK'S YELLOWSTONE 97Y

Dam: CASON'S MISS MILLIE

CASON'S MISS DENVER

Adj. BW	74
Adj. WW	518
WW ratio	93
API	151
TI	83

CE	BW	WW	YW	MCE	MM	MWW	Stay	CW	YG	MB	BF	REA
17.3	-2.7	73	110.9	9.1	19.9	56.3	17.1	39.1	-.35	.19	-.050	1.09

Double Black Double Polled Baldy. N509 is our first son of Black Hawk. We really appreciate the big ribeye he puts in his offspring with out sacrificing marbling or calving ease. To top it off Nighthawk has the makings of a true heifer bull. DNA Pending



26

**DX NORMAN 816N518**

ASA# 4610500

Tattoo: N518 • BD: 03-17-2025

Hetero Black • Homo Polled • PB SM

HOOK'S XAVIER 14X

Sire: **HOOK'S BLACK HAWK 50B**

HOOK'S YVETTE 100Y

SVS KING PIN YU09

Dam: **DX DELUXE 816D638**

DX XCITING 816X103

Adj. BW	79
Adj. WW	574
WW ratio	103
API	143
TI	77

CE	BW	WW	YW	MCE	MM	MWW	Stay	CW	YG	MB	BF	REA
14.8	-1	72.7	107.1	8.6	25.4	61.7	21	30.4	-.34	.03	-.050	.96

Heterozygous Black Homozygous Polled. Here is another Black Hawk son. His dam is a picture perfect red blaze face that has raised a lot of good ones. She has a nursing ratio of 104 on 8 calves. DNA Pending

**LOT 26**

27

**DX NORTHWEST 131N534**

ASA# 4610513

Tattoo: N534 • BD: 03-26-2025

Red • Polled • 3/4 SM 5/32 AR 3/32 AN

DX JACKPOT 801J125

Sire: **DX LARIAT 131L344**

DX HOPE 131H003

GLS FIREBIRD F102

Dam: **DX JULIETTE 131J168**

HSF MS QUEST 5Y 31B

Adj. BW	78
Adj. WW	560
WW ratio	101
API	124
TI	72

CE	BW	WW	YW	MCE	MM	MWW	Stay	CW	YG	MB	BF	REA
12.7	-0.4	72.1	107.2	8.5	24.6	60.5	19.3	28.8	-.34	.06	-.057	.88

Non-Dilute Red Homozygous Polled. Northwest is double bred to the old 31B cow that produced so many good ones including Lot 1 again this year. It makes sense that he would follow her type of thickness and fleshing ability. Use this 3/4 blood in a purebred or SimAngus program with confidence. DNA Pending

**LOT 27**

28

**DX NIKE 26N504**

ASA# 4610473

Tattoo: N504 • BD: 03-11-2025

Red • Polled • 1/2 SM 1/2 AR

BIEBER CL ATOMIC C218

Sire: **BIEBER CL ENERGIZE F121**

BIEBER CL ADELLE 575D

DX JACKPOT 801J125

Dam: **DX LILLIAN 26L373**

DX HILLARY 26H034

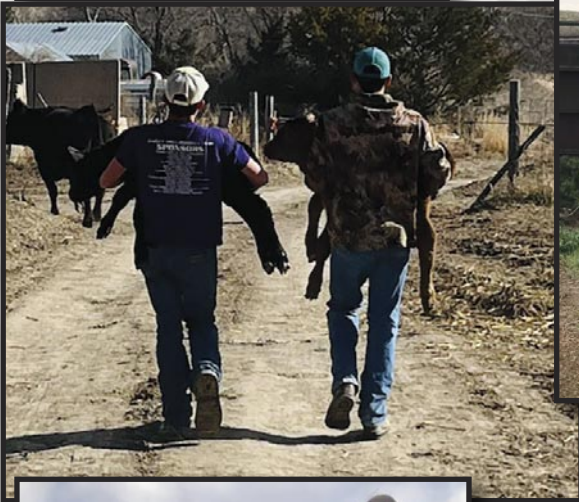
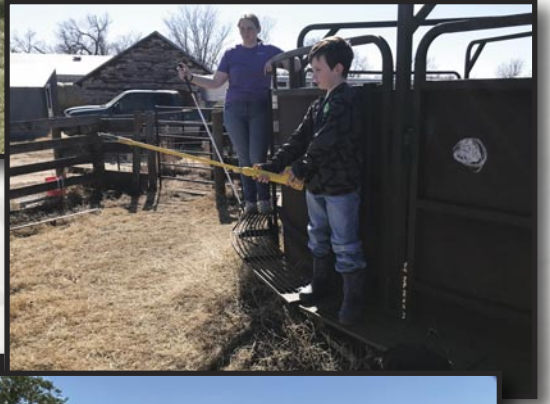
Adj. BW	75
Adj. WW	563
WW ratio	101
API	139
TI	77

CE	BW	WW	YW	MCE	MM	MWW	Stay	CW	YG	MB	BF	REA
18.5	-3.6	64.6	102.6	10.7	26.6	58.8	15.5	22.4	-.14	.29	-.015	.49

Non-Dilute Red Double Polled. You will love this deep dark red SimAngus son of Energize. His 2 year old dam by Jackpot did an outstanding job with this low birthweight star. Use him on heifers with confidence. DNA Pending

**LOT 28**







# QUICK GUIDE TO ASA EPDs AND \$ INDEXES

**Expected Progeny Differences (EPDs):** EPDs are the most accurate and effective tool available for comparing genetic levels. In using EPDs, the difference between two sires' EPDs represents the unit difference expected in the performance of their progeny. For example, if sires A and B have EPDs of +10 and -5, a 15-unit difference would be expected in their progeny (moving from -5 to +10 yields 15 units). Key to using EPDs is knowing what units they are expressed in. For example, if the above case referred to weaning weight EPDs, A would be expected to sire 15-*pounds* more *weaning weight* than B. If calving ease were the trait, A would be expected to sire 15-*percent* more *unassisted births* in first-calf heifers; in other words, if B sired 30 assists in a group of 100 heifers, we'd expect A to require 15 assists. A percentile-ranking chart is required to determine where a bull's EPDs rank him relative to other bulls in the breed. For percentile rankings or more detailed information about EPDs and \$ indexes visit [www.simmmental.org](http://www.simmmental.org). Listed below are the units ASA EPDs are expressed in:

**All-Purpose Index (API):** Dollars per cow exposed under an all-purpose-sire scenario. (See below for more details.)

**Back Fat (BF):** Inches of backfat.

**Birth Weight (BW):** Pounds of birth weight.

**Calving Ease (CE):** Percent of unassisted births when used on heifers.

**Carcass Weight (CW):** Pounds of carcass weight.

**Maternal Calving Ease (MCE):** Percent of unassisted births in first-calving daughters.

**Milk (MLK):** Pounds of weaning weight due to milk.

**Marbling (MRB):** Marbling score.

**Maternal Weaning Weight (MWW):** Pounds of weaning weight due to milk and growth.

**Ribeye Area (REA):** Square inches of ribeye.

**Warner-Bratzler Shear Force (WBSF):** Pounds of force required to shear a steak.

**Stayability (STAY):** Percent of daughters remaining in the cowherd at 6 years of age.

**Terminal Index (TI):** Dollars per cow exposed under a terminal-sire scenario. (See below for more details.)

**Weaning Weight (WW):** Pounds of weaning weight.

**Yearling Weight (YW):** Pounds of yearling weight.

**Yield Grade (YG):** Yield grade score.

**\$ Indexes:** Though EPDs allow for the comparison of genetic levels for many economically important traits, they only provide a piece of the economic puzzle. That's where \$ indexes come in. Through well-conceived, rigorous mathematical computation, \$ indexes blend EPDs and economics to estimate an animal's overall impact on your bottom line. The same technology that led to the dramatic progress in swine, poultry and dairy genetics over the last several decades was used to develop the following \$ indexes:

**All-Purpose Index (API):** Evaluates sires for use on the entire cow herd (bred to both Angus first-calf heifers and mature cows) with the portion of their daughters required to maintain herd size retained and the remaining heifers and steers put on feed and sold grade and yield.

**Terminal Index (TI):** Evaluates sire for use on mature Angus cows with all offspring put on feed and sold grade and yield.

**Using API and TI:** First, determine which index to use; if you're keeping replacements use API, if not, TI. Then, just as with EPDs, zero in on the unit difference between bulls. (As described above, index units are in dollars per cow exposed.) The difference can be used to determine how much a bull is worth compared to another. Or, put another way, how much you can pay for one bull compared to another. For example, when buying an all-purpose-type sire, you can quickly figure a bull scoring +100 for API is worth an extra \$6,000 over a +50 bull if both are exposed to 30 cows over 4 years ( $\$50 \text{ diff.} \times 30 \text{ hd.} \times 4 \text{ yr.} = \$6,000$ ). A percentile-ranking chart is required to determine where a bull's index value ranks him relative to other bulls in the breed.





13703 Beaver Creek Rd  
Atwood, KS 67730

Created by:  
**ASA PUBLICATION, INC**  
One Genetics Way, Bozeman, MT 59718  
Phone: 406-587-2778  
[www.simmental.org](http://www.simmental.org)



[www.dixonfarms.com](http://www.dixonfarms.com)